

# Dog Kennel Hill Primary School - Science

**Topic: Plants**

**Year: 2**

**Strand: Biology**

### What should I already know?

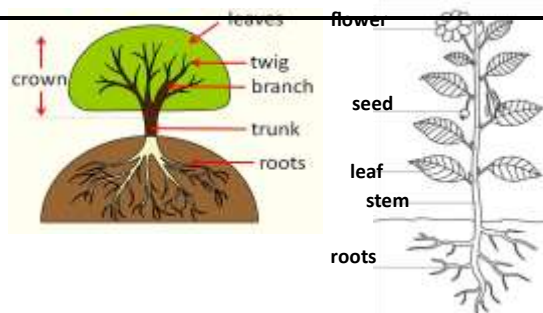
- **Plants** can grow.
- The names of some **common garden plants** (e.g. poppy, rose) and the names of some **common wild plants** (e.g. daisy, dandelion, nettle).
- **Deciduous trees** lose their **leaves** in the autumn every year.
- **Evergreen trees** have green **leaves** all year round.
- The parts of a plant including **petals, fruits, roots, bulbs, seeds, stem, trunks and branches**

### What will I know by the end of the unit?

- |  |   |
|--|---|
| <p><b>Plants</b> are living things and require things to grow.</p> | <ul style="list-style-type: none"> <li>• <b>Plants</b> require things such as water, warmth, <b>nutrients</b> from soil and light to grow.</li> <li>• If they do not have one or more of these things, they may stop growing. □ <b>Plants</b> can:</li> <li>• move</li> <li>• grow</li> <li>• react to their surroundings (sense)</li> <li>• absorb <b>nutrients</b></li> <li>• <b>reproduce</b></li> </ul>   |
| <p>Which <b>plants</b> do we eat?</p>                              | <ul style="list-style-type: none"> <li>• Many <b>plants</b> provide us with food by bearing <b>fruits</b> which carry their <b>seeds</b>.</li> <li>• When farmers grow <b>plants</b> to provide us with food, these are called <b>crops</b>.</li> <li>• We eat many <b>fruits</b> that contain <b>seeds</b> (including tomatoes!).</li> <li>• We also eat different parts of <b>vegetable plants</b>: □ <b>root vegetables</b> (carrots, potatoes)</li> <li>• <b>stem vegetables</b> (celery, spring onion)</li> <li>• <b>leafy vegetables</b> (cabbage, lettuce)</li> <li>• <b>flowering vegetables</b> (cauliflower, broccoli)</li> <li>• We eat grains and cereals from <b>plants</b> too (wheat, oats).</li> <li>• Nuts and seeds are also sometimes edible (sesame seeds, pumpkin seeds, peanuts).</li> <li>• Many <b>herbs</b> are also grown to add flavour to foods.</li> </ul> |



What are the parts of **common trees** and **plants**?



### Vocabulary

Branches	parts that grow out from the <b>tree trunk</b> and have <b>leaves, flowers, or fruit</b> growing on them
Bulb	a root shaped like an onion that grows into a <b>flower or plant</b>
Common	something that is found in large numbers or it happens often
Crop	<b>plants</b> such as wheat and potatoes that are grown in large quantities for food
Deciduous	a <b>tree</b> that loses its leaves in the autumn every year
Evergreen	a <b>tree</b> or bush which has green <b>leaves</b> all the year round
Flower	the part of a <b>plant</b> which is often brightly coloured and grows at the end of a <b>stem</b>
Flowering	<b>trees or plants</b> which produce <b>flowers</b>
Fruit	something which grows on a <b>tree</b> or bush and which contains <b>seeds</b> or a stone covered by a substance that you can eat
Garden	a piece of land next to a house, with <b>flowers, vegetables, other plants,</b> and often grass
Herb	a <b>plant</b> whose <b>leaves</b> are used in cooking to add flavour to food, or as a medicine
Leaf/leaves	the parts of a tree or plant that are flat, thin, and usually green
Nutrients	substances that help plants and animals to grow
Petal	thin coloured or white parts which form part of the <b>flower</b>
Plant	a living thing that grows in the earth and has a <b>stem, leaves, and roots</b>
Reproduce	when an animal or plant produces one or more individuals similar to itself
Roots	the parts of a <b>plant</b> that grow under the ground
Seed	the small, hard part from which a new <b>plant</b> grows
Stem	the thin, upright part of a <b>plant</b> on which the <b>flowers and leaves</b> grow
Tree	a tall <b>plant</b> that has a hard <b>trunk, branches, and leaves</b>
Trunk	the large main <b>stem</b> from which the <b>branches</b> grow
Vegetable	<b>plants</b> such as cabbages, potatoes, and onions which you can cook and eat
Vegetation	<b>plants, trees and flowers</b>
Weed	a <b>wild plant</b> that grows in <b>garden</b> and prevents the <b>plants</b> that you want from growing properly
Wild	animals or <b>plants</b> that live or grow in natural surroundings and are not looked after by people

**Dog Kennel Hill Primary School - Science**

**Topic: Plants**

**Year: 2**

**Strand: Biology**

Question 1

Question 2

Question 3

Question 4

Question 5