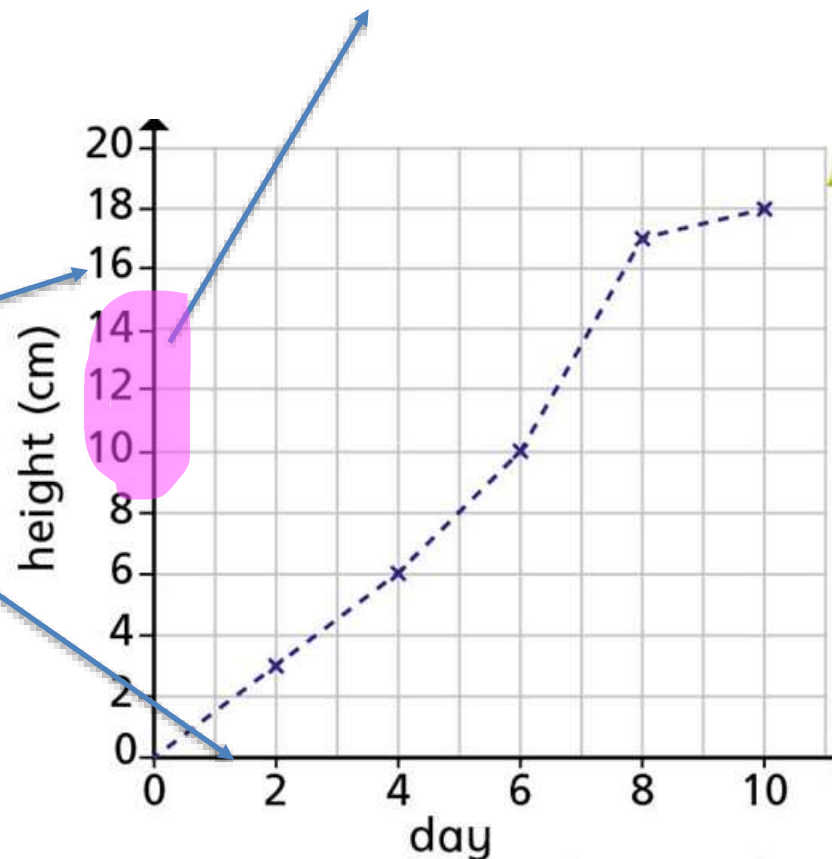


Today we will be looking at **line graphs**.

Line Graphs -a graph that shows information that is connected in some way (such as change over time)

It has a **Y axis** which is the vertical line, and an **X axis** which is the horizontal line

Line graphs also need to have some sort of scale- this is the amount each square represents or 'goes up in'. Read notes section below for further explanation.

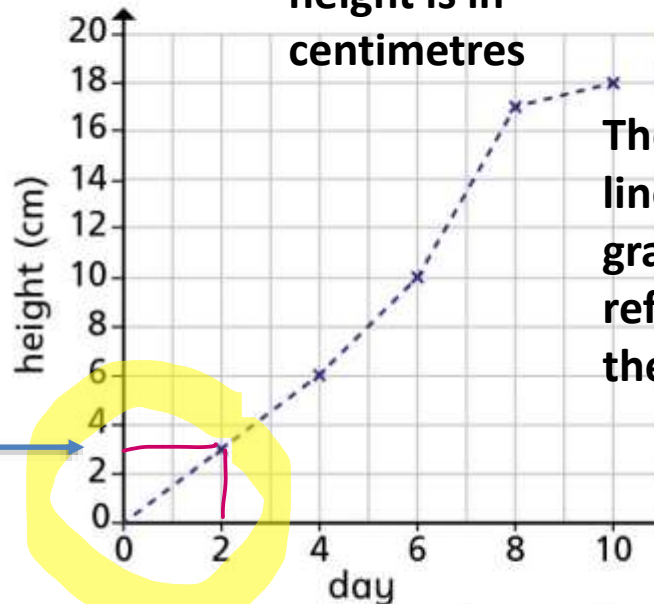


Introducing line graphs

The vertical line on a graph is referred to as the **Y AXIS**. The height is in centimetres

The horizontal line on a line graph is referred to as the **X AXIS**.

- 1 The line graph shows the growth of some cress over 10 days.

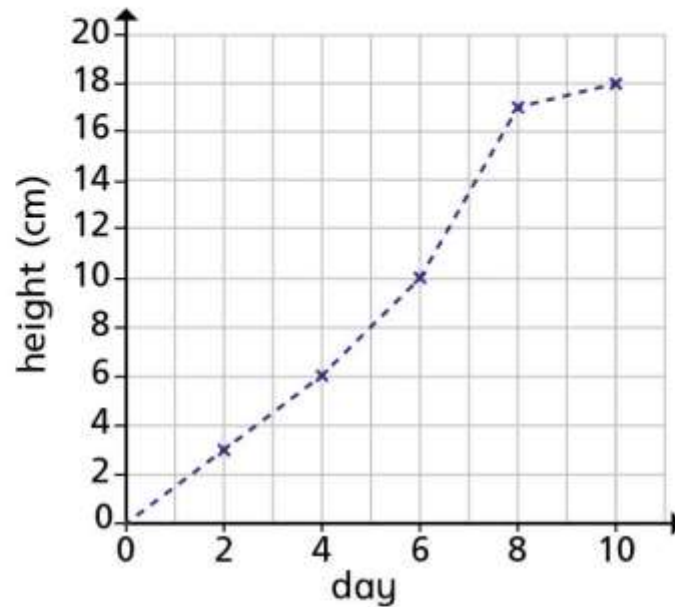


The line goes through 3

- How tall was the cress on Day 2?
- On what day did the cress reach 10 cm?
- Estimate the height of the cress on Day 5

 cm

 day
 cm



d) Estimate when the cress will reach a height of 14 cm.

day

e) Between which two consecutive days did the cress grow the most?

day and day

2

The line graph shows the distance a cyclist travels on a bike ride.

a) Fill in the missing labels.

b) How long did it take the cyclist to travel 10 miles?

hours

c) How far had the cyclist travelled after 4 hours?

miles

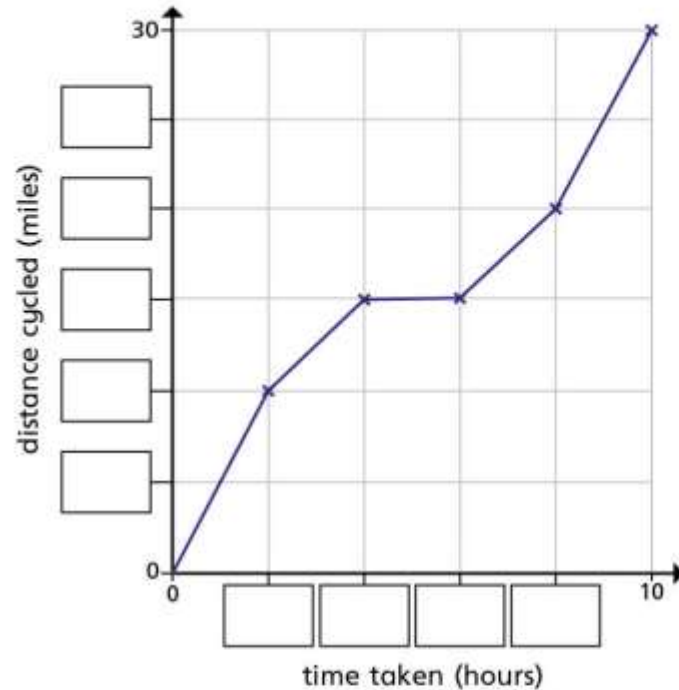
d) How far did the cyclist travel in total?

miles

e) How far did the cyclist travel between 4 and 6 hours?

miles

What might have happened during this time?

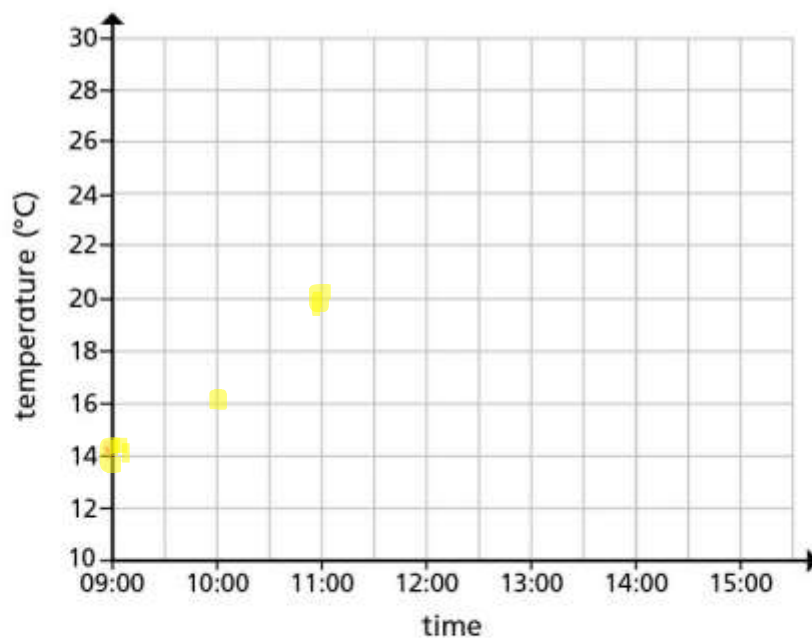


3

The table shows the temperature outside on Monday.

Time	09:00	10:00	11:00	12:00	13:00	14:00	15:00
Temperature (°C)	14	16	20	26	24	20	18

a) Use the information in the table to complete the line graph.



Key Monday _____ Tuesday _____



3

b) On Tuesday, the following temperatures were recorded.

Time	09:00	10:00	11:00	12:00	13:00	14:00	15:00
Temperature ($^{\circ}\text{C}$)	13	16	21	22	22	19	17

Add the new information to your line graph using a different colour and complete the key.

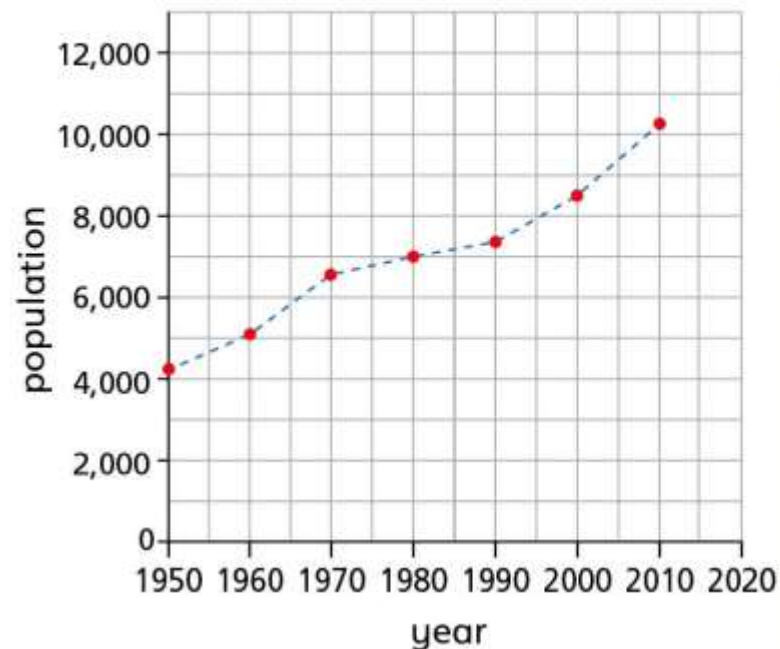
c) At what time was it hotter on Tuesday than on Monday?



4 The graph shows the population of a town from 1950 to 2010

- a) Circle the correct word to complete the statement.

The population of the town **increased / decreased** from 1950 to 2010



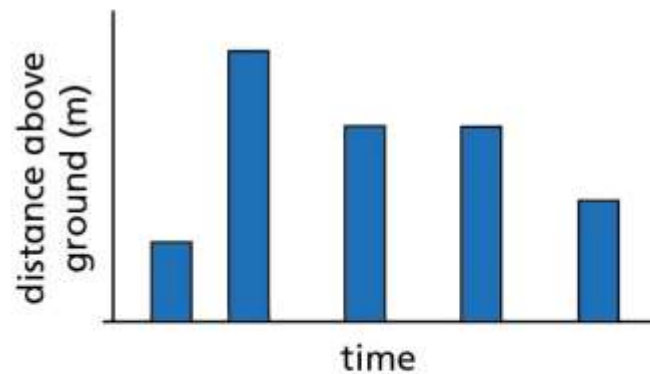
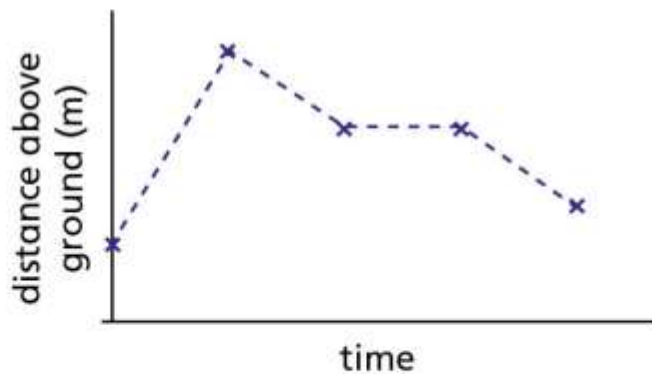
- b) Estimate the highest recorded population.
- c) In what year did the population first reach 7,000?
- d) Estimate the population in 1970
- e) Estimate the population in 2006





5

The line graph and bar chart both show the distance above ground of a bird.



Which representation is more appropriate? _____

Explain your choice to a partner.