

Thursday Maths

Telling the time to the minute

L.O. To tell the time to the minute.

Use a large clock with minute hands to help support this learning.



Mathematical Talk

Which hand is the minute hand? Which hand is the hour hand?

How many minutes is it past the hour?

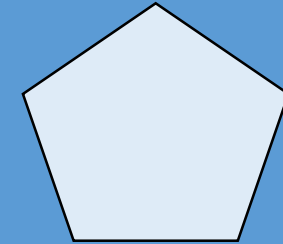
How many minutes is it to the next hour?

When are the minutes to an hour and the minutes past an hour the same?

If the hour hand is between ____ and ____, which hour is the time referring to?

Flashback: How much can you remember?

- 1) What time is it when the minutes hand and hours hand are both at 12? **Twelve o'clock**



- 2) Complete using $<$ $>$ or $=$ $\frac{2}{9}$ $<$ $\frac{7}{9}$

- 3) Sally has walked $\frac{3}{5}$ of the 500 metre journey to school.

How many more metres until she gets to school? **200 metres**

- 4) Sort these lengths into ascending order.

122 cm, 1 m 20 cm, 2 m **1 m 20 cm, 122 cm, 2 m**

Telling the time to the minute

1 Complete the sentences.

When the minute hand is pointing to 4 it is minutes past the hour.

When the minute hand is pointing to 5 it is minutes past the hour.



2 Complete the times shown on each clock.

a)



minutes past 2

b)



minutes past 2

2 c)



minutes past

d)



3 Complete the additions.

a) $51 + \square = 60$

b) $31 + \square = 60$

c) $39 + \square = 60$

d) $43 + \square = 60$

e) $48 + \square = 60$

f) $\square + 11 = 60$

2 Complete the times shown on each clock.



minutes past 2



minutes past

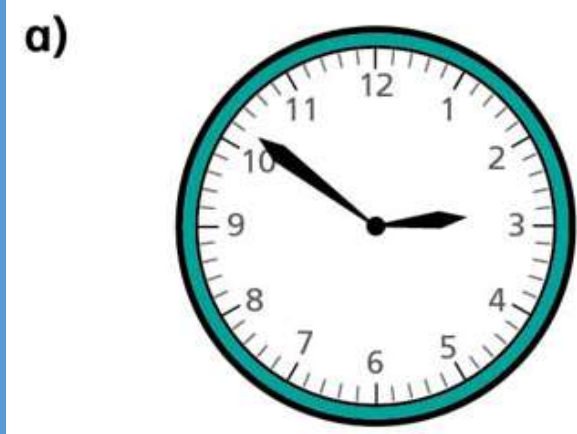


minutes past 2



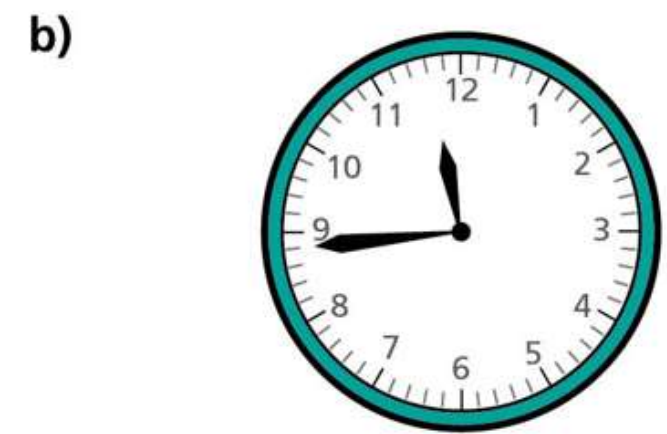
28 minutes past 6

Complete the times shown on each clock.



minutes past 2

minutes to 3



minutes past

minutes to

Complete the times shown on each clock.

a)



minutes past 2

minutes to 3

b)

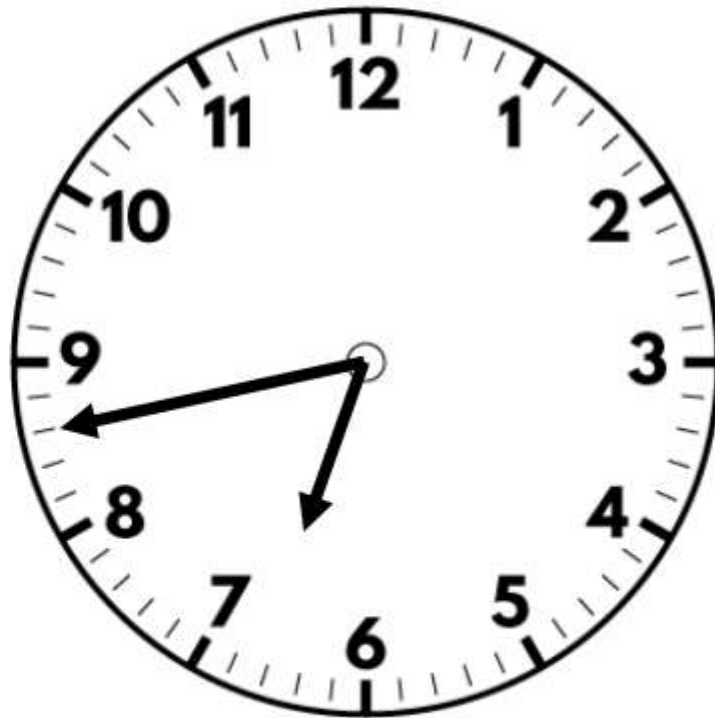


minutes past

minutes to

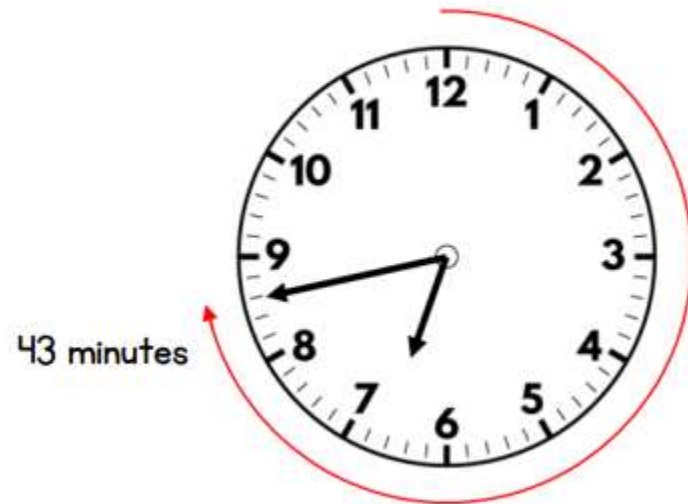
Practice some more of these throughout the day!

The time is 43 minutes past 6



True

The minute hand is pointing to 43 and the hour hand is almost at 7



Challenge:

Tommy, Whitney and Alex are telling the time.



Tommy

It is 4 minutes to 5



Whitney

It is 24 minutes to 5



Alex

It is 14 minutes to 5

a) Who is correct? _____

b) What mistake have the other two children made?