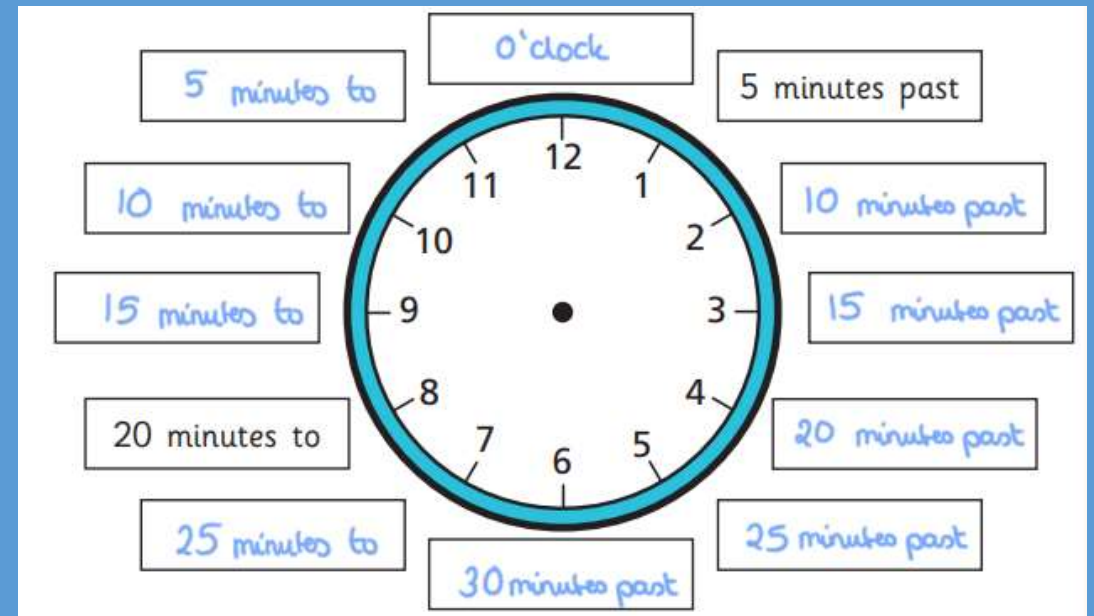
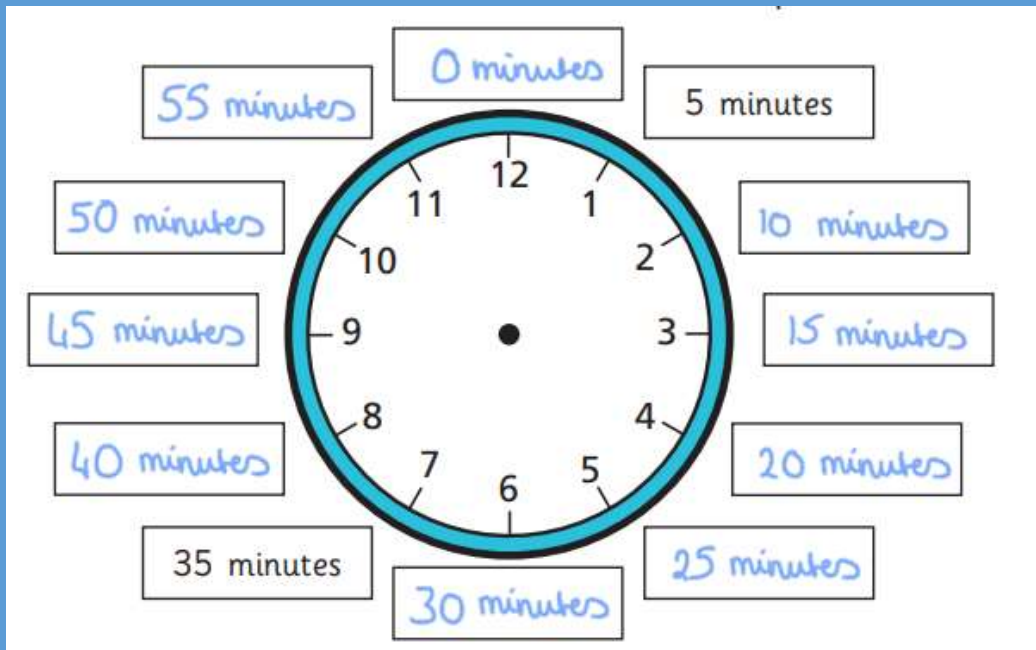


Wednesday Maths

Telling the time to 5 minutes

L.O. To tell the time to 5 minutes.

Practice saying and writing the time using digits and words.



Mathematical Talk

Which of the hands is the minute hand and which is the hour hand?

Is the minute hand past or to the hour?

How many minutes past/to the hour is the minute hand?

If the minute hand is pointing at the 6, how many minutes have passed in this hour?

What do you notice about the clocks?

Which Roman numeral represents the number ____?

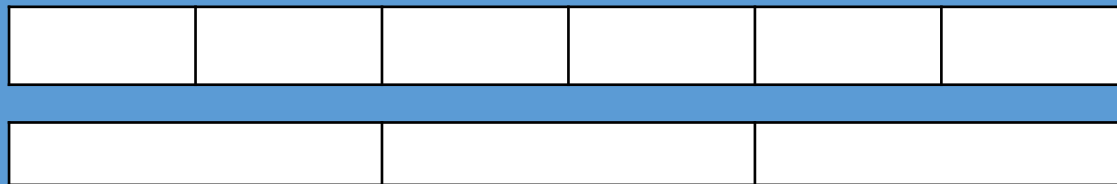
Do we ever say “45 minutes to” the hour?

Flashback: How much can you remember?

1) How many hours in 3 days? **72**

2) Which is a unit fraction? $\frac{3}{6}$, $\frac{1}{6}$, $\frac{6}{6}$, $\frac{1}{6}$

3) How many thirds are the same as 4 sixths?

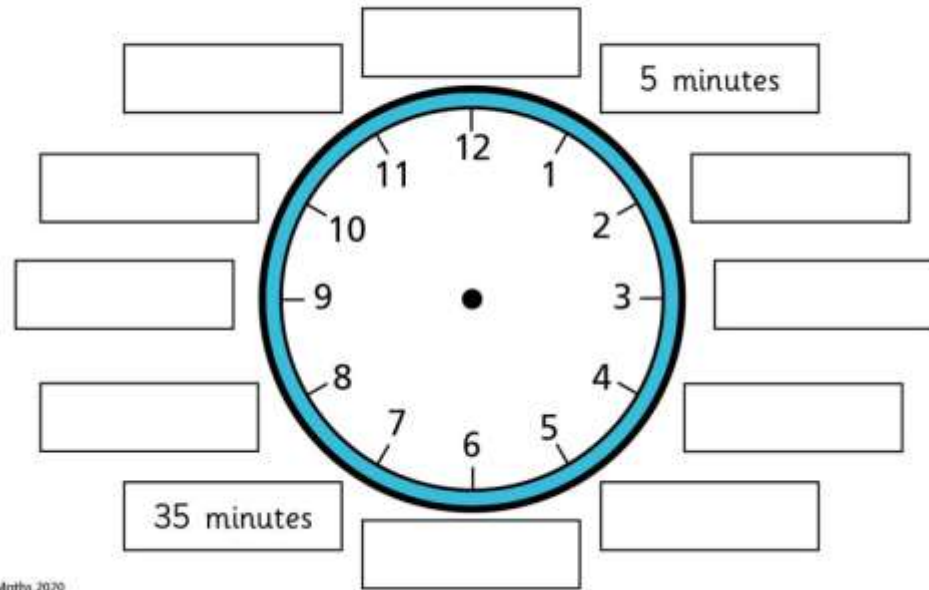


2 thirds

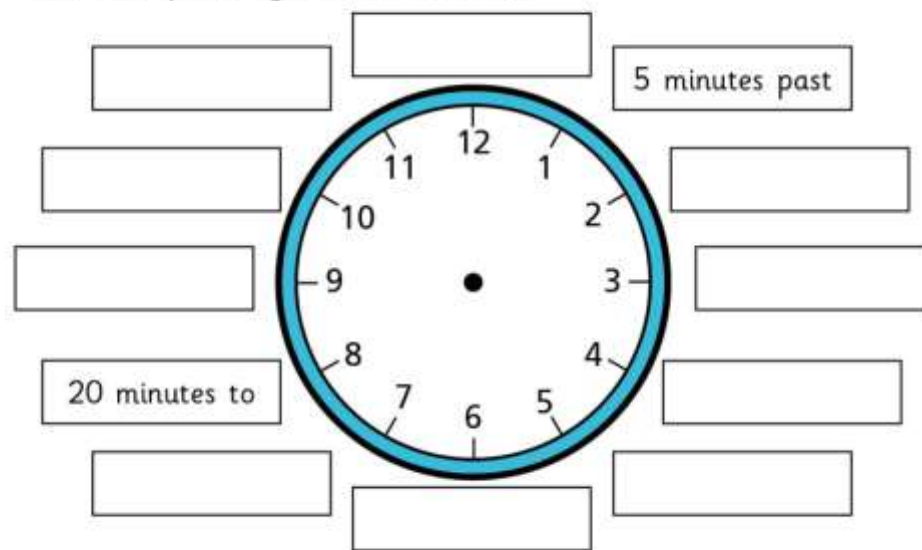
4) Complete $1\text{ m } 45\text{ cm} =$ cm



- 1 Label the clock to show the number of minutes past the hour.



- 2 Label the clock to show what time would be shown if the minute hand was pointing to each interval.



Is there more than one possible answer for each label?

3



The hour hand is pointing just after 5 and the minute hand is pointing to 2, so the time is 2 minutes past 5



What mistake has Ron made?

What time is it? _____

3



The hour hand is pointing just after 5 and the minute hand is pointing to 2, so the time is 2 minutes past 5



What mistake has Ron made?

The minute hand pointing to 2 means it is 10 minutes past not 2 minutes past.

What time is it? 10 minutes past 5

4

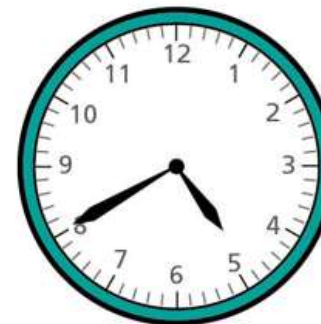
What time is shown on each clock?

a)



minutes past

b)



minutes to

4

c)



minutes past

d)



4 What time is shown on each clock?



20 minutes past 4



20 minutes past 5



20 minutes to 5



10 minutes to 10

Complete the times to make the statements correct.

a) 51 minutes past 1 = minutes to 2

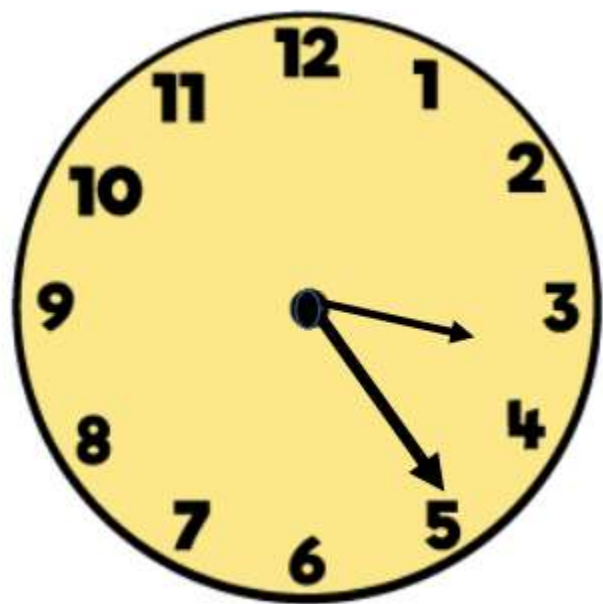
b) 51 minutes past 7 = minutes to

c) 34 minutes past = minutes to 8

d) 44 minutes past 12 = minutes to

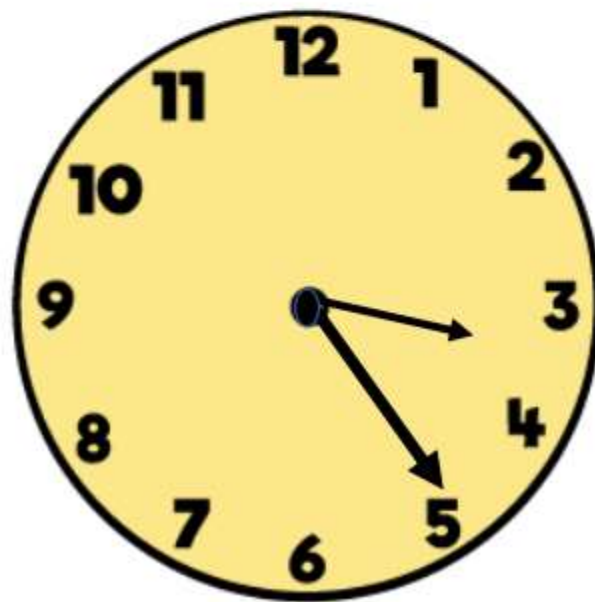
e) minutes past = 1 minute to 10

The time is 25 minutes to 3



False

The time is 25 minutes past 3



Challenge:

The minute hand and the hour hand of a clock are both pointing to an even number.

It is before midday. What times could it be?

Give three possible answers.
