



## Thought of the Week

*Science and everyday life cannot and should not be separated.* – Rosalind Franklin

## A Message from our Head of School

Dear Parents and Carers,

**Beech Class** wowed their audience with a pirate themed assembly including sea shanties, an action packed adventure story full of pirates, a treasure map and the Punto Nero, as well as dance and ukulele playing. Well done Beech Class!

**Sycamore Class'** assembly was all about the Victorians. The children showcased drama from a script they had written themselves and answered questions from the audience. Well done Sycamore Class!

**Sycamore Class** also enjoyed an afternoon at Docklands Settlements Community Centre where they took part in an activities session sponsored by the PE School Sports Network which focused on promoting **good mental health through sport and exercise**. A huge **thank you** to parents who supported the trip, allowing Sycamore Class to take part.

**Eucalyptus Class** had a fantastic time working with Alleen's Year 12 pupils in their first of a series of four animation workshops. You can see more [here](#).

In DT, **Elder Class** had a great time designing, making and eating their own healthy wraps. You can see more [here](#)!

We were also delighted to launch **British Science Week** with an assembly and workshops from Science Boffins. This year's science week theme is *Connections*. Science is fun and easy connections can be made with science at home. For the month of March, there will be a **Marvin and Milo** science comic in each newsletter. Parents and carers may enjoy conducting these simple experiments and make *connections* with science at home. If you complete the experiment, please do share the results with us!

Wishing our school community a peaceful weekend.

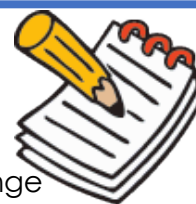
**Barbara Ghezzi**

## Our Curriculum

The **Relationship, Sex and Health Education (RSE) curriculum** became statutory in September 2020. Relationships and Sex Education supports and guides children and young people in lifelong learning about relationships, emotions, the human biology of sex and sexuality. It is **compulsory** for all primary school children to receive relationship education. At DKH we follow the Christopher Winter's Project. **You can find out more [HERE](#)** as well as watch a video, which provides further information and answers **frequently asked questions**, [HERE](#). RSE will begin after the May Half Term.

## Note from the Office

Has your child had an **asthma review** recently?



Please ensure that you arrange a review of your child's **asthma plan** once per year with the asthma nurse. It is important that you and provide the school with a copy of the plan as it enables us to help you manage your child's asthma at school.

Please speak with the school office if you have any questions or need additional information.

## Science Week

It was an exciting launch to British Science Week with a visit from the Science Boffins. Pupils took part in an exciting assembly about fire and combustion. Science does not get any better than this! KS2 then were able to take part in individual workshops regarding states of matter which included an introduction to dry ice, dry ice burps, giant bubbles and fire extinguishers. A huge thank you to the **Friends of DKH** for sponsoring this brilliant event.





# DKH Newsletter 10<sup>th</sup> March 2023



## Dates for the Diary



08.03.23	Beech Class Assembly
09.03.23	Sycamore Class Assembly
09.03.23	Sycamore Class PE and Exercise for Mental Health Session
10.03.23 – 17.03.23	British Science Week
13.03.23	Eucalyptus Class Animation Workshop
15.03.23	Elder Class Assembly
16.03.23	Willow Class Assembly
17.03.23	Year 5 Virtual STEM Space Challenge
17.03.23	Red Nose Day
20.03.23	Eucalyptus Class Animation Workshop
20.03.23	Nursery Parents Evening
21.03.23	Copleston Church Easter Assembly
22.03.23	Reception to Year 6 Parents Evening
28.03.23	Year 5 Critical Thinking Workshop
27.03.23	Eucalyptus Class Animation Workshop
27.03.23	Nursery Parents Evening
28.03.23	Elder Class visit to Copleston Church
29.03.23	EYFS Assembly
30.03.23	Reception to Year 6 Parents Evening
30.03.23	Autism Awareness Day
31.03.23	Last day of the Spring Term – Finish at 2pm
03.04.23 – 14.04.23	End of term holidays
17.04.23	Teacher Inset Day – No Children
18.04.23	Children return to school
18.04.23 – 21.04.23	Year 3 and Year 4 Bikeability workshops
28.04.23	School Disco
01.05.23	Bank Holiday

## Attendance

Caterpillar	93.62%	Eucalyptus	99.26%
Willow	92.98%	Sycamore	95.56%
Elder	97.32%	Hazel	89.33%
Palm	97.75%	Elm	98.1%
Beech	92.06%	Maple	91.79%

## Star of the Week!



We would like to recognise the children who have been great examples of our school values and have shown true commitment to their learning. Well done!

Nursery	<b>Andrew</b> , for his fantastic writing! <b>Nova</b> , for always thinking of others!
Reception	<b>Rudi</b> , for always showing our school value of respect. <b>Phoenix-Rose</b> , for her fantastic doubling!
Willow	<b>Eliza</b> , for doing her best in our maths assessments and putting all her learning into practice. I am so proud of you! <b>Jaden</b> , for looking out for all members of the Willow class team.
Elder	<b>Mouhamed</b> , for increased focus and concentration in all lessons. Keep it up Mouhamed! <b>Camari-Lee</b> , for being a good maths partner and working hard to explain his learning to others.
Palm	<b>Zaccai</b> , for showing a considerable amount of empathy towards others. <b>Wilton</b> , for showing stupendous vocabulary and clear narrative in his writing.
Beech	All of <b>Beech Class</b> for their creative and musical class assembly! Well done Beech Class!
Eucalyptus	<b>Abel</b> , for his contributions to our Talk Task activities in Maths. <b>Mila</b> , for always trying her best and being a fantastic table partner.
Sycamore	<b>Jack</b> , for demonstrating kindness and empathy to his friends. To the whole of <b>Sycamore Class</b> for a triumphant team effort of pulling together for their class assembly.
Hazel	<b>George</b> and <b>Chidima</b> , for showing such an empathetic attitude towards pupils who may be having a difficult time around school.
Maple	<b>Seraiah</b> , for always seeking to help and understand others. <b>Safi</b> , for an improvement in his mental and written arithmetic skills.
Elm	<b>Issan</b> , for his focus and enthusiasm during our music lesson on Blues. <b>Demi</b> , for her focus during maths lessons and for working so hard.

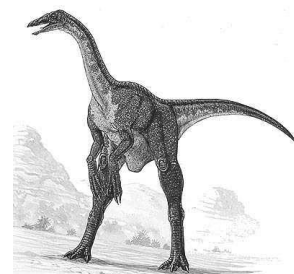
## Charles's Friday Facts *By Charles, Year 4*

**Did you know** that Deinocheirus, in ancient Greek, means terrible hand?

**Did you know** that for decades, Deinocheirus was the world's most mysterious dinosaur?

Click [here](#) and [here](#) to learn more!

If your child is good with deadlines and would like to contribute to the newsletter, please speak with Barbara Ghezzi, Head of School.





# We love LEARNING

Willow Class have been looking at length and mass in maths. In this lesson, they looked at the mass of two objects and used their star words to describe the relationship between the two objects. The children enjoyed choosing classroom objects to compare and then estimating which item would be heaviest or lightest. Then they had to test and prove their estimate using the a balance scale.





**DO TRY THIS AT HOME**

**Featuring: Marvin and Milo**

**What you need:** • Drinking straw • A friend • A ruler • Scissors • Sticky tape • Saucer of water

**Issue #1**

**The Challenge Milo!**

**Step 1.**

Get your ruler and cut your drinking straw into two pieces: one 3cm long and one 5cm long.

To lift the water from the saucer using a straw without sucking

**Step 2.**

Join the pieces together with sticky tape along one side so they form a 90 degree angle, but leave both ends open.

Stand the smaller end of the straw in the saucer of water.

Now blow hard!

So what happened? Well, when air moves, its pressure falls. So when you blow, the pressure at top of the straw drops. But the air over the saucer keeps the same pressure, so the water is pushed up the straw

*Vic Le Billon*

## MAGNA CAMPS

### EASTER 2023

3RD APRIL TO 14TH APRIL 2023

OFSTED REGISTERED SPECIALIST MULTI-ACTIVITY HOLIDAY CLUBS FOR 5-11YRS.

**SAVE 15%**  
WHEN BOOKING A FULL WEEK\*

**JOIN US FOR THE GREAT BIG EASTER ADVENTURE!**

**EARLY BIRD DISCOUNT**  
BOOK BEFORE 28TH FEBRUARY 2023  
**SAVE 10%**

**BIG EASTER ADVENTURE**

HATTER'S TEA PARTY	EGG-SCAPE GAMES	EGG HUNTS
NERF-A-GEDDON	INFLATABLES	RAID THE NEST
EGG-STEME SCIENCE	BIG BUNNY DISCO	DODGE THE EGG
EGG-CITING SPORTS	CAPTURE THE RABBIT	EASTER PARADE
		AND MUCH MUCH MORE...

Fully Ofsted registered, Tax-Free Childcare and Childcare Vouchers accepted

Standard Day 09:00 - 16:30 Extended Day 09:00 - 18:00

**BOOK YOUR MAGNA CAMPS TODAY!**

[www.magnagroups.com](http://www.magnagroups.com) 0333 012 4984

\*T&Cs apply, maximum discount 15% of total booking

## Science Connections with Marvin and Milo!

These experiments have not been specifically safety tested for home use but we believe them to be safe if the instructions are followed. Adult supervision or direction is recommended as appropriate.

### What you need

A drinking straw  
A friend  
A ruler  
Scissors  
Sticky tape  
Saucer of water

### Instructions

The challenge is to lift the water from the saucer using a straw but without sucking.  
Get your ruler and cut your drinking straw into two pieces: one 3cm long and one 5cm long.  
Join the pieces together with sticky tape along one side so they form a 90 degree angle, but leave both ends open.  
Stand the smaller end of the straw in the saucer of water.  
Now blow hard!

### Results and Explanation

When air moves, its pressure falls. So when you blow, the pressure at the top of the straw drops. But the air over the saucer keeps the same pressure, so the water is pushed up the straw.